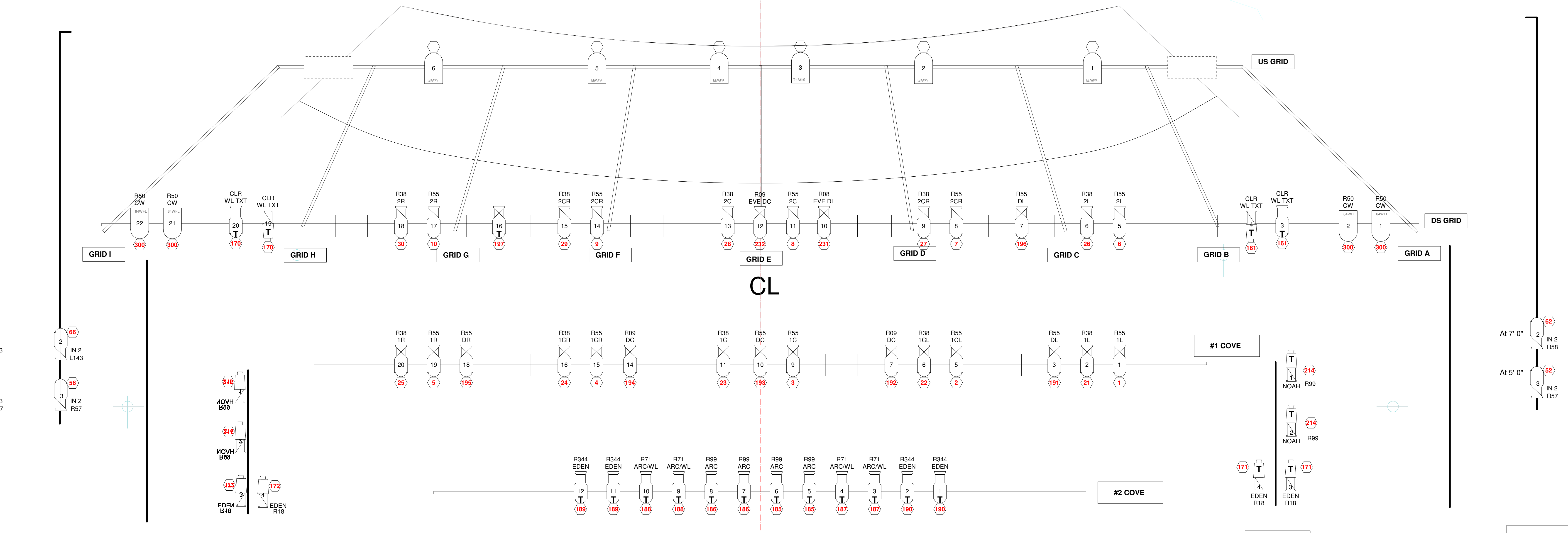


57-Cyc
56-Traveller
55-#5 Border
54-Rope
53
52
51-Track
50-#5 Electric
49
48-Black Scrim
47-#4 Legs
46-#4 SL-SR Tail
45-#4 Border
44-#4 Border-18'-0"
43
42
41-#4 Electric
40
39
38
37-#3 Legs
36-#3 Legs
35-#3 Border-18'-0"
34
33
32
31
30-#3 SL-SR Tail
29
28-#3 Electric
27
26
25-Broken
24-#2 Legs
23-Traveller
22-#2 Border-18'-0"
21
20
19
18-#2 SL-SR Tails
17
16-#2 Electric
15
14-Screen Legs
13-#1 Legs
12-#1 Border
11
10
9-RP Screen
8
7
6
5
4-#1 Electric
3-SR Tab
2-Act Curtain
1-Tesser



<p><b>KEY</b></p> <ul style="list-style-type: none"> <li>Alt 6X9-750W, 1KW</li> <li>Alt 6X12-750W, 1KW</li> <li>Alt 6X16-750W, 1KW</li> <li>Alt 6X22, 1KW</li> <li>STRAND CENTURY 1KW</li> <li>19" Strand SL, 575W</li> <li>26" Strand SL, 575W</li> <li>PAR56 WFL, 1KW</li> <li>PAR56 Strip 3 circuits, 300W</li> <li>Alt Sky Cyc 3 circuits, 1KW</li> </ul>	<p><b>NOTES:</b></p> <ol style="list-style-type: none"> <li>18" spacing unless noted.</li> <li>All ERS units lamp FEL (1KL).</li> <li>All instruments on DS GRID have a tophat.</li> <li>All units should be safety chained.</li> <li>See LD/ALD for position of floor mounts.</li> <li>Two (2) Studio Spot 250 on #1 Electric require AC and DMX.</li> <li>Three (3) 18" ERS used as follow spots in #1 Cove on rheostats. Power should be Non-dim.</li> </ol>	<p><b>SCHOOL OF THEATRE AND DANCE</b> Kent State University</p>	<p><b>LIGHT PLOT</b></p> <p>Plate 1 of 1</p> <p>Scale: 1/2"=1'-0" DWG: CRS 1/26/04</p>
---	---	---	--

